

# WISEPlace™

A Community of Hope & Housing

## OUR VISION

We envision an Orange County where every woman in need is safely housed, empowered, and on a path to personal stability.

## OUR MISSION

To lead the effort of ending homelessness for unaccompanied women through housing solutions and empowering wrap-around services that provide a path toward personal self-reliance.



# THE WISEPLACE WAY

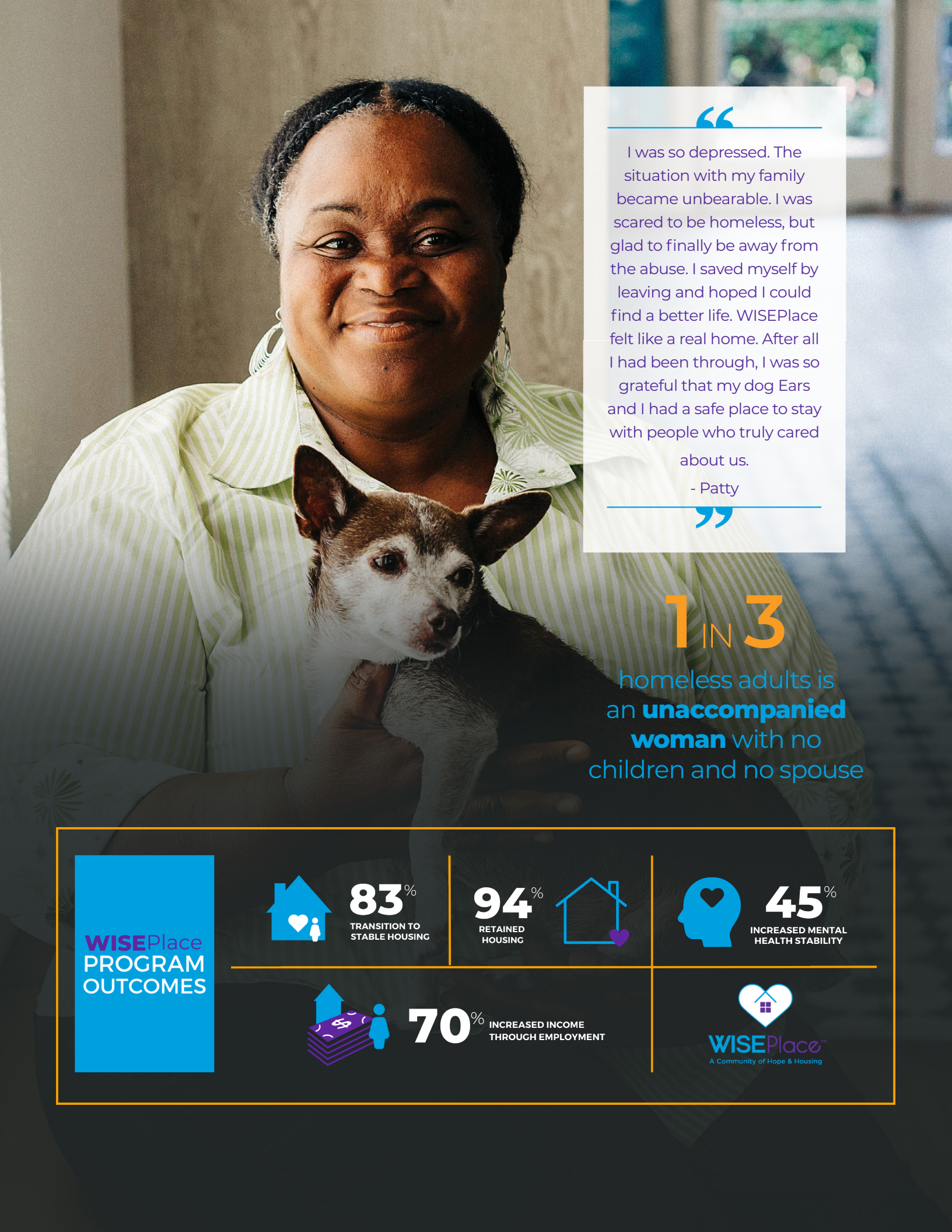
A solutions-based program to get women back on their feet with support.



---

For more than 90 years, WISEPlace has helped more than 8,560 women by providing safe shelter, counseling and mental health services, case management and addiction recovery, and employment assistance. We serve unaccompanied women experiencing homelessness who often lack the support system of a spouse, significant other, or children; this is where they can get the help and support to rebuild their lives. The heart of what we do is provide a community of hope and housing where participants are supported with vital wrap-around services on their journey from homelessness to personal self-reliance.





“

I was so depressed. The situation with my family became unbearable. I was scared to be homeless, but glad to finally be away from the abuse. I saved myself by leaving and hoped I could find a better life. WISEPlace felt like a real home. After all I had been through, I was so grateful that my dog Ears and I had a safe place to stay with people who truly cared about us.

- Patty

”

1 IN 3

homeless adults is an **unaccompanied woman** with no children and no spouse

## WISEPlace PROGRAM OUTCOMES



83%  
TRANSITION TO  
STABLE HOUSING

94%  
RETAINED  
HOUSING



45%  
INCREASED MENTAL  
HEALTH STABILITY



70%  
INCREASED INCOME  
THROUGH EMPLOYMENT



WISEPlace™  
A Community of Hope & Housing



# WE NEED YOUR SUPPORT

Here's how you can get involved with WISEPlace. To learn more, email [volunteers@wiseplace.org](mailto:volunteers@wiseplace.org).

## Support WISEPlace at the Miller Foundation Gala

Join WISEPlace and The Miller Foundation at their 6th Annual Charity Gala, a Midsummer Night's Dream on Saturday, September 23! This fun event will include auction opportunities, dinner and dancing. Show your support for WISEPlace by becoming a Sponsor, Underwriter or by purchasing individual tickets.

## Join the Hope & Housing Alliance

Give the gift of ending homelessness and join the Hope & Housing Alliance by donating \$1,200 to directly support the deposit and first month's rent to end the homelessness of a deserving woman.

## Your Generous Support Will Change Lives

Interested in donating? A donation of any amount will support WISEPlace and the women we serve. Your gift(s) will support housing, food, clothing, personal development services, and financial empowerment curriculum to help women experiencing homelessness to become self-reliant.

## Provide a Meal for the Women We Serve

Nutritious meals are a key component of the WISEPlace Way. Let us know if you would like to cook or sponsor a meal for 15 women.

## Volunteer Your Time

There are many ways to give and get involved with our community – from leading a drive in your workplace or neighborhood, to hosting a workshop, or sharing a skill with our participants.



**WISEPlace**<sup>™</sup>  
A Community of Hope & Housing

1411 North Broadway, Santa Ana, CA 92706

[info@wiseplace.org](mailto:info@wiseplace.org) · [WISEPlace.org](http://WISEPlace.org)

